

Demeure ancienne de 600 m² avec piscine

9 MONTFORT-L'AMAURY

2 750 000 €*

* Agency fees will be borne entirely by the seller



DESCRIPTION DU BIEN

Unique, in the center of Montfort-L'Amaury, former priory transformed into a large family house of 600m² built on beautiful wooded and landscaped land of nearly 3000 m². The renovation work carried out by the owners has made it possible to preserve the charm of the old with an organization of spaces corresponding to the needs of a large family. On the ground floor, the entrance on the courtyard side leads to a large living room with fireplace and a large dining room with adjoining office, all of these rooms offering full-level access to the terrace on the garden side. In the wing of the building there is a very large kitchen with dining area, a bedroom with bathroom on the ground floor, a relaxation area with sauna, a laundry room upstairs, this space can be used as an office with independent access or caretaker's apartment. On the first floor, garden side, large master suite with bathroom, shower room and dressing room. In this part of the building, also four other bedrooms all with bathroom or shower; in the kitchen side wing, a fifth large bedroom with bathroom. On the second floor, two bedrooms with bathroom, a reading room, two large playrooms with additional beds. The outdoor spaces are decorated with a large terrace, a barbecue area with summer kitchen and above all a large area around the swimming pool with solarium, terraces, bar, pool house (built in 2017). The property is located 300m from the hyper-center of Montfort and the market (Sundays), 3 km from the train station to Montparnasse in 35 minutes, 40 km from Paris.

LE BIEN EN DETAIL

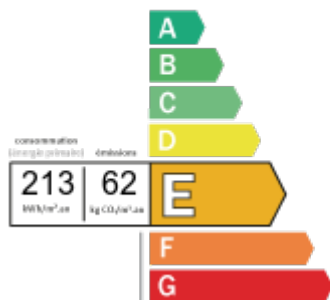
Reference : 83376671
Town : Montfort-l'Amaury
Transaction : Sale
Type de bien : Propriété
Price Including charges : € 2 750 000
Area : 598 m²
Land : 2900 m²

Living room : 60 m²
Number of pieces : 20
Bedrooms : 10
Heating : Central Fioul / Mazout
Swimming pool : yes



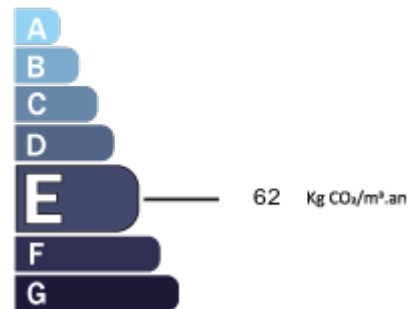
DIAGNOSTICS DPE - GES

Energy consumption in KWh/m² / year



Greenhouse Gas Emissions in Kg CO₂² / m² / year

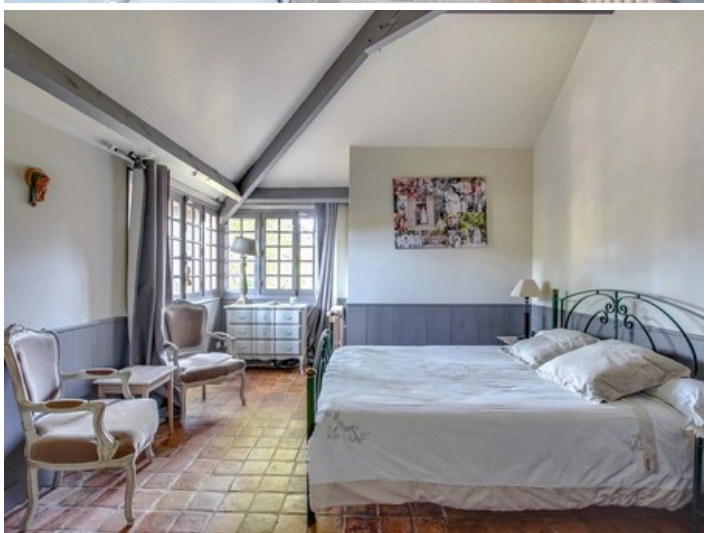
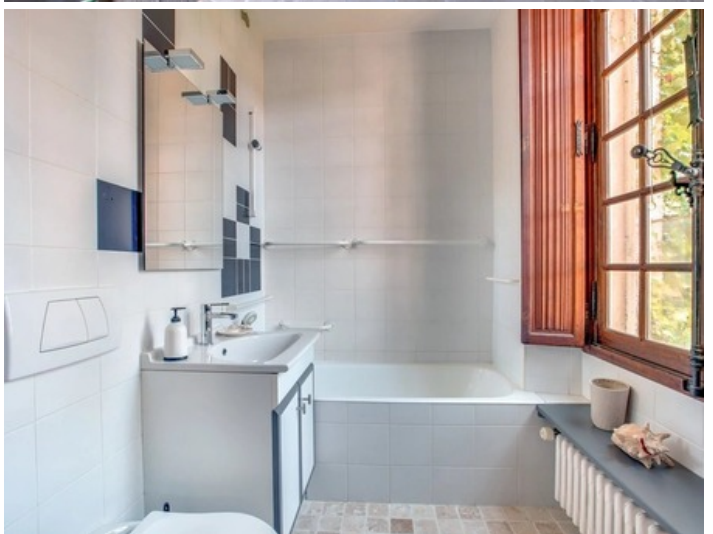
* Dont émissions de gaz à effet de serre



LE BIEN EN PHOTOS











PROPRIÉTÉS
DE PRESTIGE

proprietes-de-prestige.com

29 rue de Bassano
75008 - PARIS
Tél. 01 53 53 67 13